

Rodolfo Cosimi



Terra Rossa Oltre

Montalcino Super Tuscan - this wine has a lot of pedigree!

The body of this wine comes from the Brunello clone of Sangiovese, while the Merlot adds a bit of "sweetness" to the nose and finish.



Rodolfo Cosimi



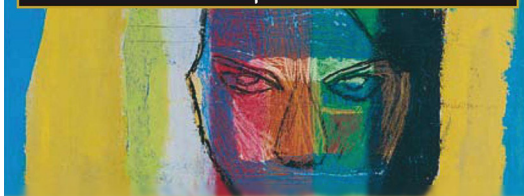
Terra Rossa Oltre

Montalcino Super Tuscan - this wine has a lot of pedigree!

The body of this wine comes from the Brunello clone of Sangiovese, while the Merlot adds a bit of "sweetness" to the nose and finish.



Rodolfo Cosimi



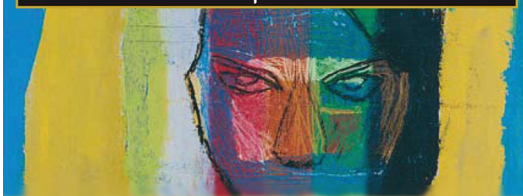
Terra Rossa Oltre

Montalcino Super Tuscan - this wine has a lot of pedigree!

The body of this wine comes from the Brunello clone of Sangiovese, while the Merlot adds a bit of "sweetness" to the nose and finish.



Rodolfo Cosimi



Terra Rossa Oltre

Montalcino Super Tuscan - this wine has a lot of pedigree!

The body of this wine comes from the Brunello clone of Sangiovese, while the Merlot adds a bit of "sweetness" to the nose and finish.

